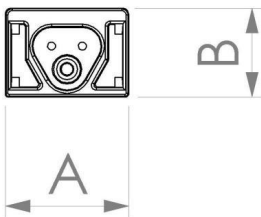




Flood 500		Flood 750		Flood 1000	
98°/91°		98°/91°		99°/92°	
m	ø	m	ø	m	ø
1.0	2.05	1.0	2.04	1.0	2.06
2.0	4.10	2.0	4.07	2.0	4.11
3.0	6.15	3.0	6.11	3.0	6.17



A 20 B 14,4 (mm)

Vector HD 500/750/1000mm

Technical specification

LED linear light with separate electronic gear. Housing of extruded aluminum for optimal cooling and low weight. NL Power electronic gear for optimal lamp life, light flow and colour performance. High performance energy efficient LEDs. Possible to connect up to 8m Vector LED light with same electronic gear.

Model and colors Available with diffuse cover and in different lengths.

Area of use Light for indoor back lighting, shelf lighting and other applications.

Technical data

Mains (input) voltage	220-240 V
Driver output	Constant voltage 28V, Max 60W
Total weight	0,41kg/m
Form of protection	IP 20, class III
Color temperature	3000/3500/4000 K
Light source	LED
Operating position	Universal
Control gear	Electronic
Start time	Instant
Driver	Separate
Safety glass	Included
Beam spreads	Flood
Design lifetime	L80 B10 50 000h

Art no

231-101-002
231-102-002
231-104-002
121-508
123-72
123-73
123-74
123-75
121-46
123-78-10
123-190-10
123-191-10
123-192-10
123-54
950-01-114

Description

Vector HD (L.500 mm), 3500K
Vector HD (L.750 mm), 3500K
Vector HD (L.1000 mm), 3500K
NLP LED 60E-230V with Halogen free EU cable
Cable set, secondary side, 2m
Cable set, secondary side, 4m
Cable set, serial connection, 150mm
Cable set, serial connection, 600mm
Splitter, 6 outlets
Mounting clip bracket
Tilt bracket 110 degree
Lightgap bracket
Tilt bracket 132 degree
End Cover (included)
Magnetic strip

Color

Grey
Grey
Grey
Grey
White
White
White
White
Black
White
White
White
White
White
White
White
-

Type	Delivered lumen output (lm)	System power (W)	EEI ³
835	710lm/m	7W/m	

Note

Special versions can also be produced depending on quantity. Final shipping destination may require minor modifications of components as well as article numbers, be sure to state the country in which the fixtures will be used.